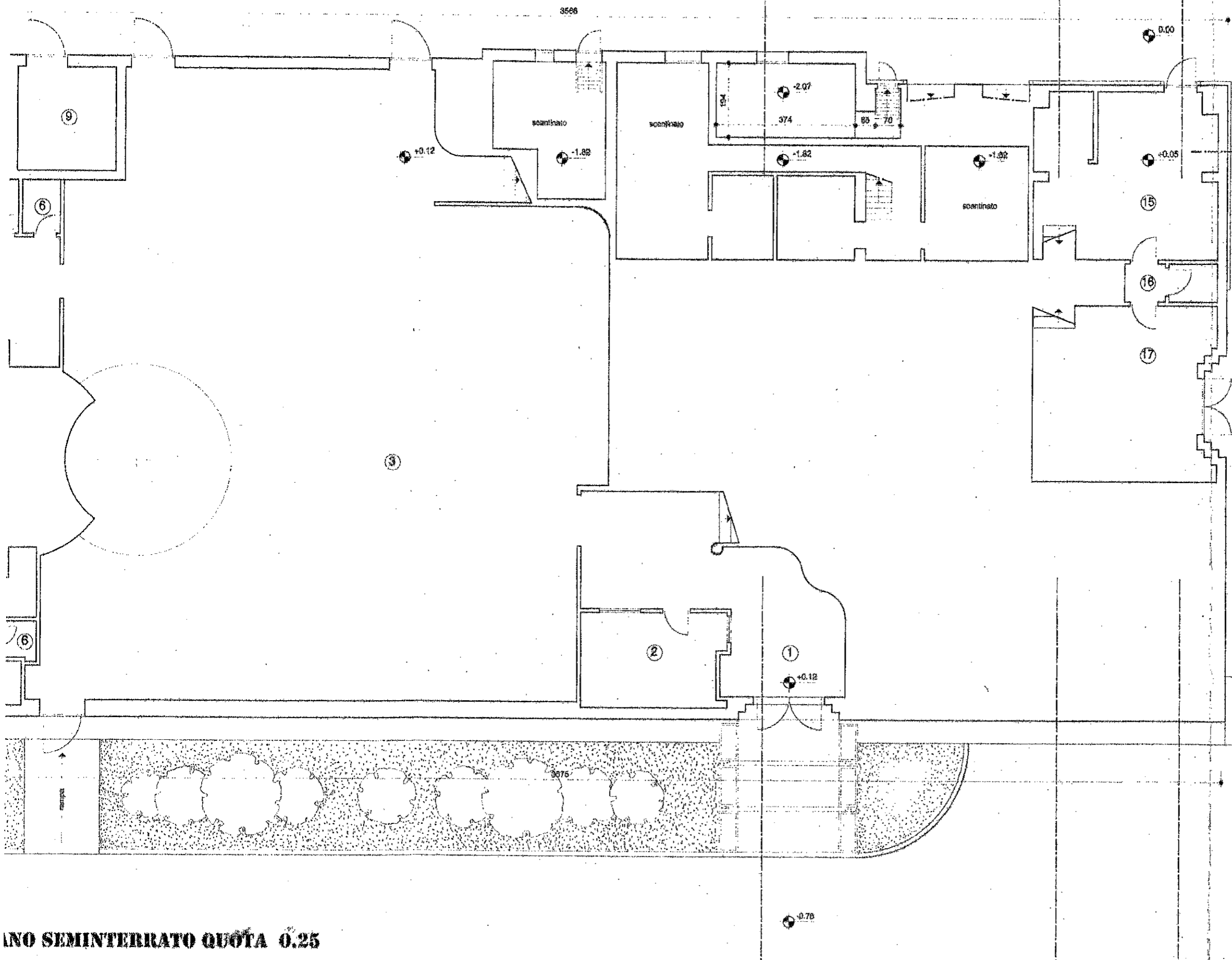


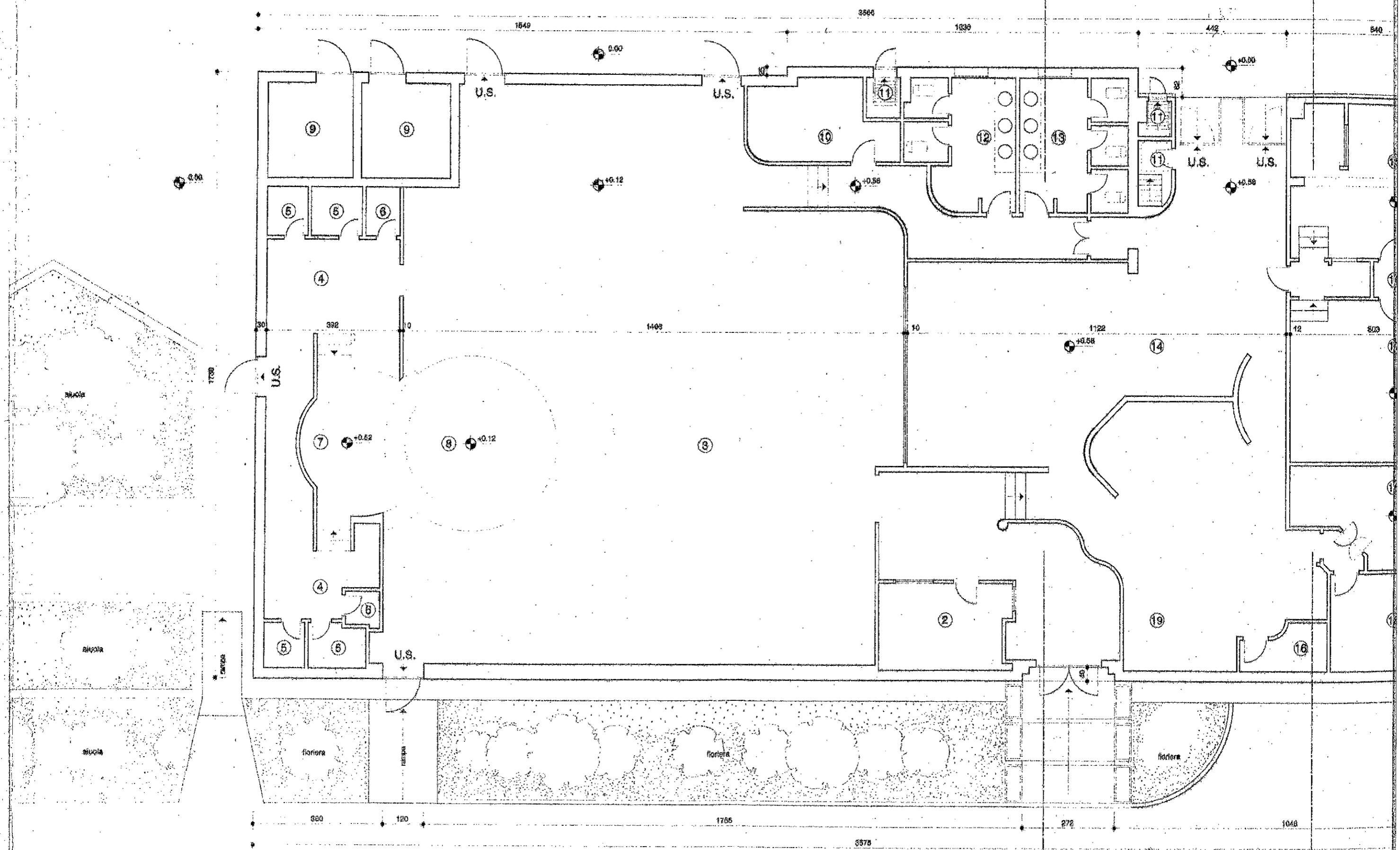
PIANTA PIANO SEMINTERRATO QUOTA 0.25

- ① ingresso
- ② guardaroba
- ③ sala
- ④ camerino
- ⑤ w.c.
- ⑥ doccia
- ⑦ palco orchestra
- ⑧ pista da ballo
- ⑨ locale ENEL
- ⑩ locale condizionamento
- ⑪ accesso scantinato
- ⑫ servizi uomini
- ⑬ servizi donne
- ⑭ piano bar / ristorante
- ⑮ cucina
- ⑯ ripostiglio
- ⑰ magazzino
- ⑱ ufficio
- ⑲ american bar

□ I bagni sprovvisti di aperture esterne sono dotati di aerazione meccanica
 □ le quote sono espresse in centimetri



ANO SEMINTERRATO QUOTA 0.25

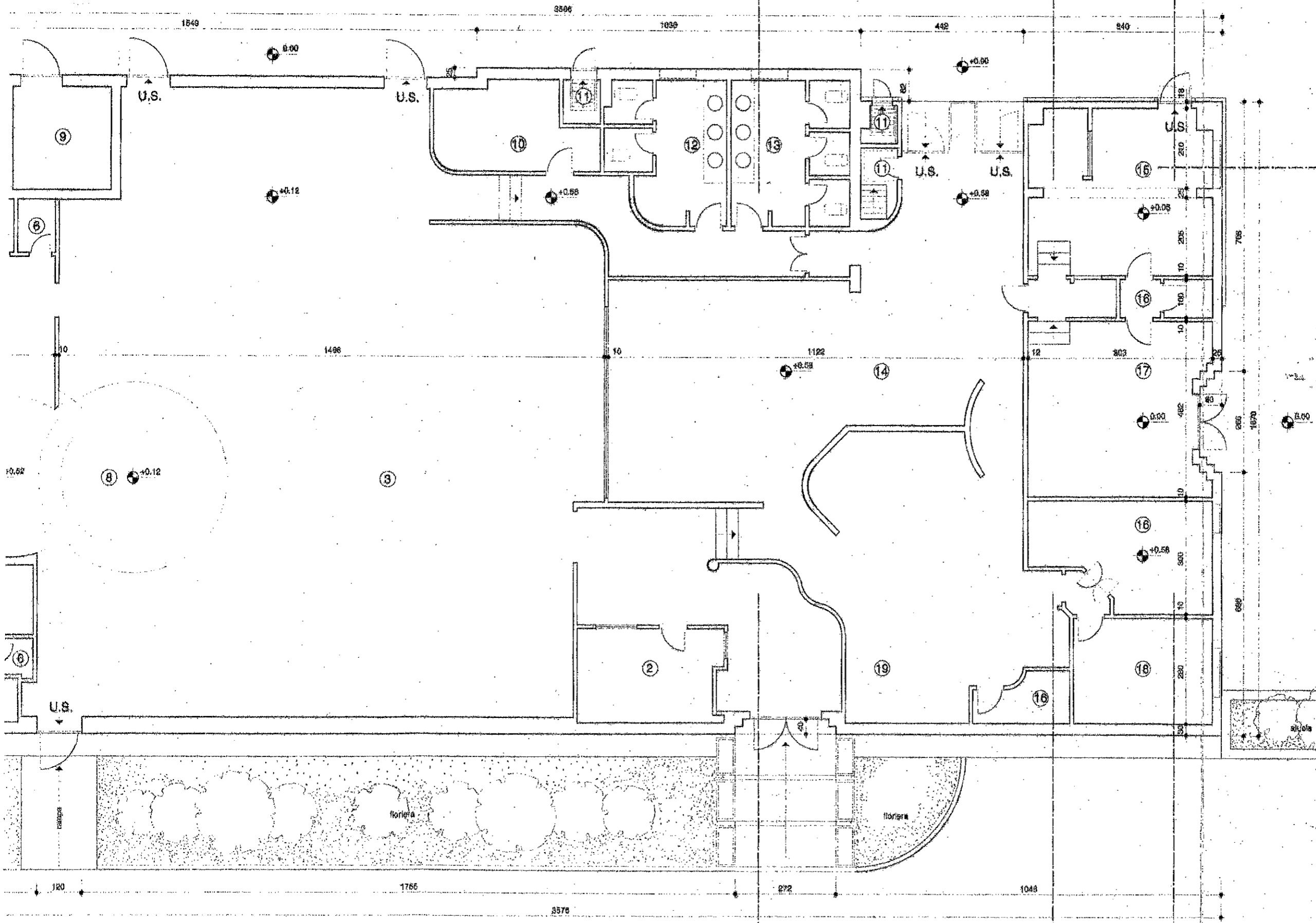


PIANTA PIANO TERRA QUOTA 1.50

vialeto rialzato

- ① Ingresso
- ② guardaroba
- ③ sala
- ④ camerino
- ⑤ w.c.
- ⑥ doccia
- ⑦ palco orchestra
- ⑧ pista da ballo
- ⑨ locale ENEL
- ⑩ locale condizionamento
- ⑪ accesso scantinato
- ⑫ servizi uomini
- ⑬ servizi donne
- ⑭ piano bar / ristorante
- ⑮ cucina
- ⑯ ripostiglio
- ⑰ magazzino
- ⑱ ufficio
- ⑲ american bar

□ I bagni sprovvisti di aperture esterne sono dotati di aerazione meccanica
 ● le quote sono espresse in centimetri



INO TERRA QUOTA 1.50

Vialeto Afahato



rivestimento in grigliato tipo alamesi

porte
teglia/1000

luce 80 x 80 per
recesso copertura

+3.05

centrale termica

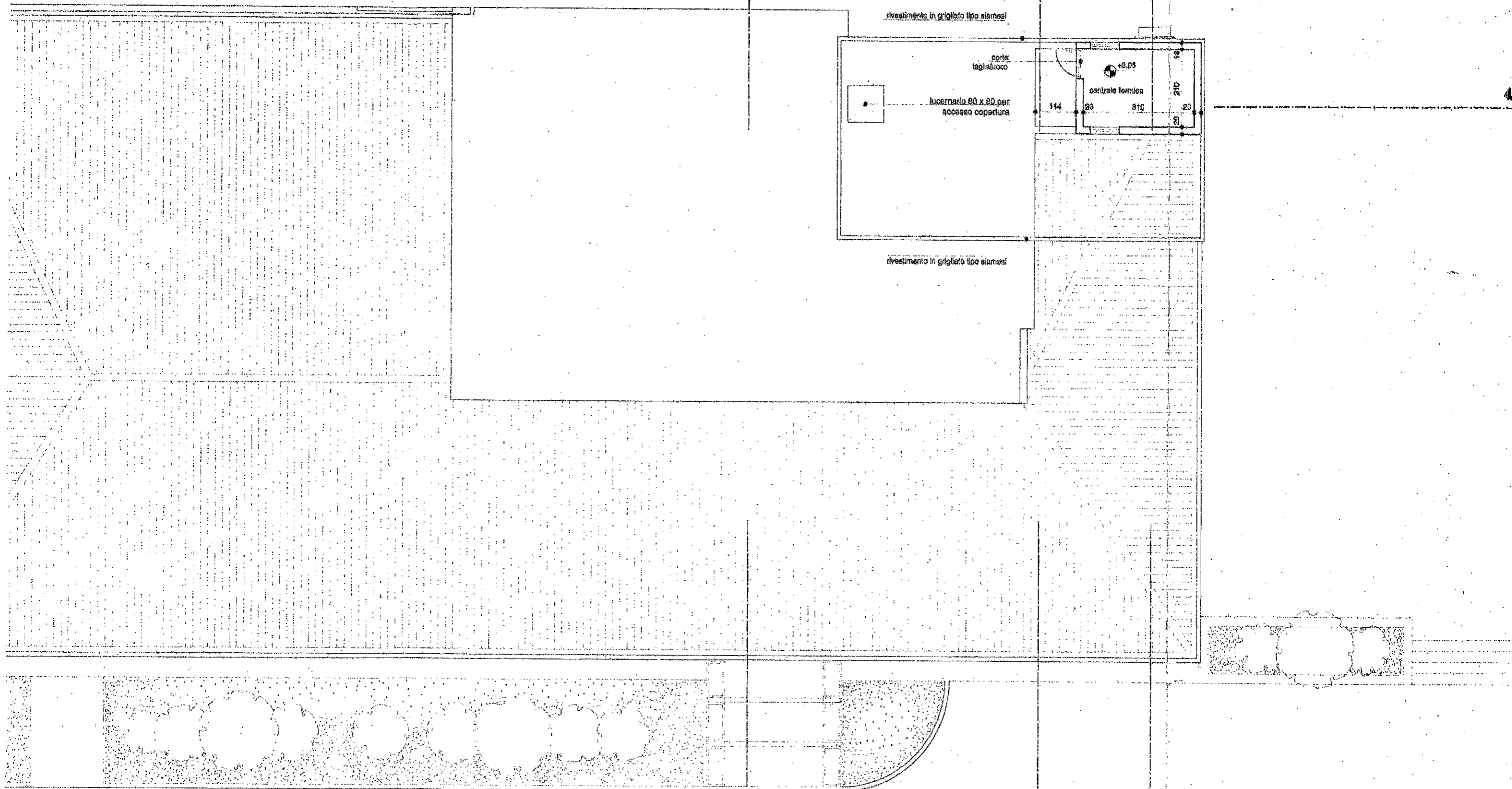
114

20

810

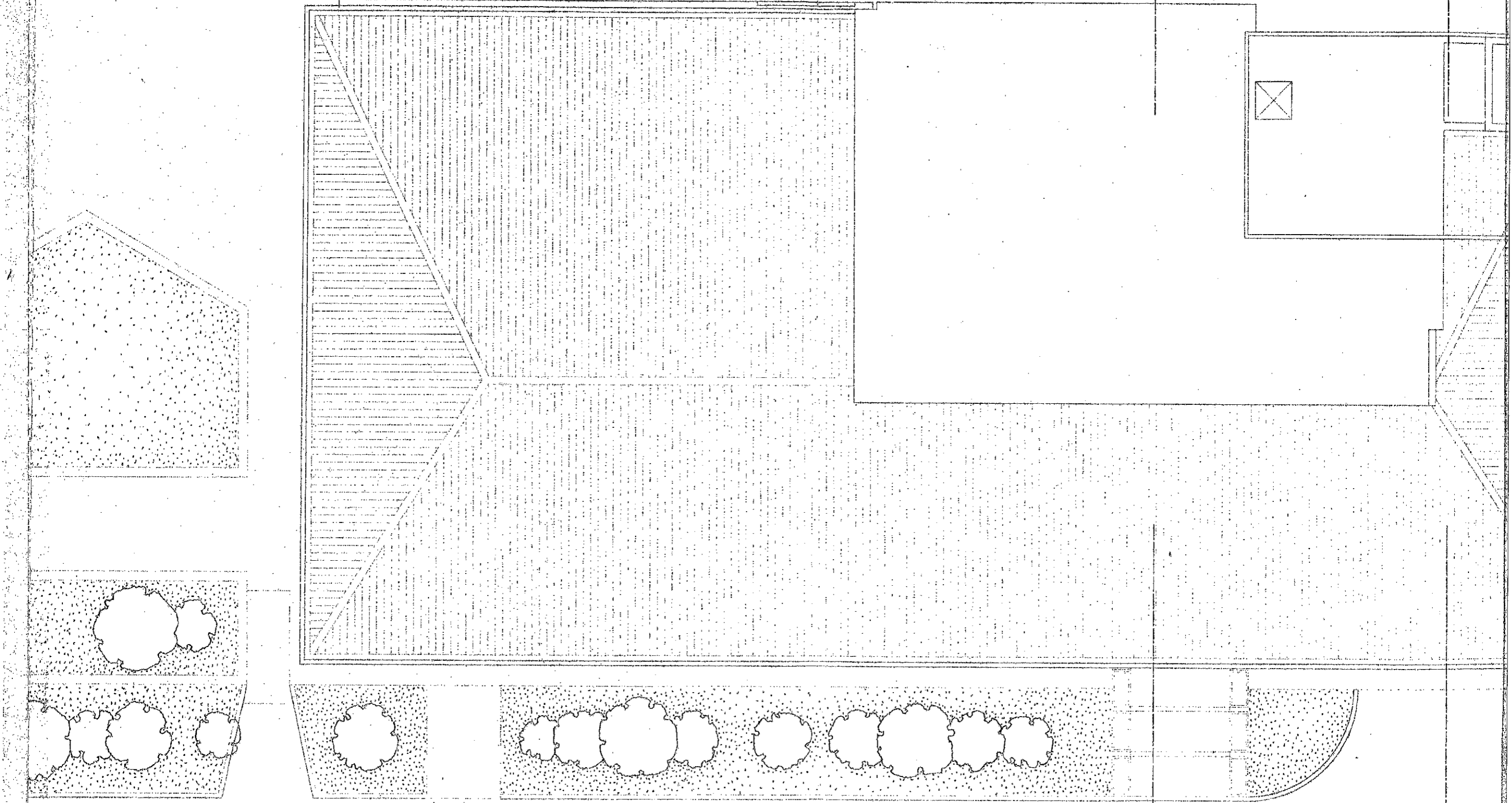
rivestimento in grigliato tipo alamesi

PIANTA DELLA COPERTURA - QUOTA 5.05

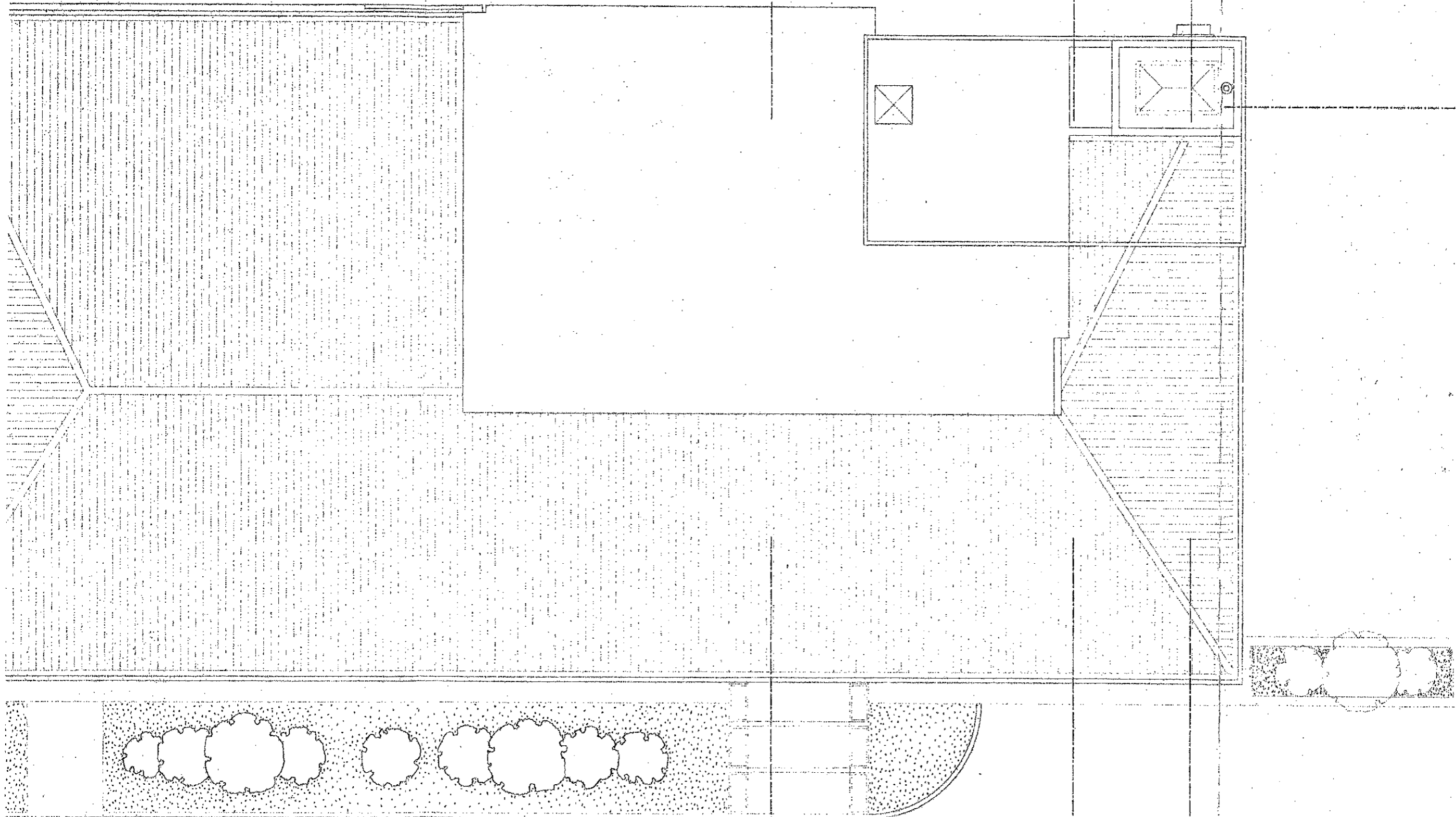


NELLA COPERTURA - QUOTA 5.05

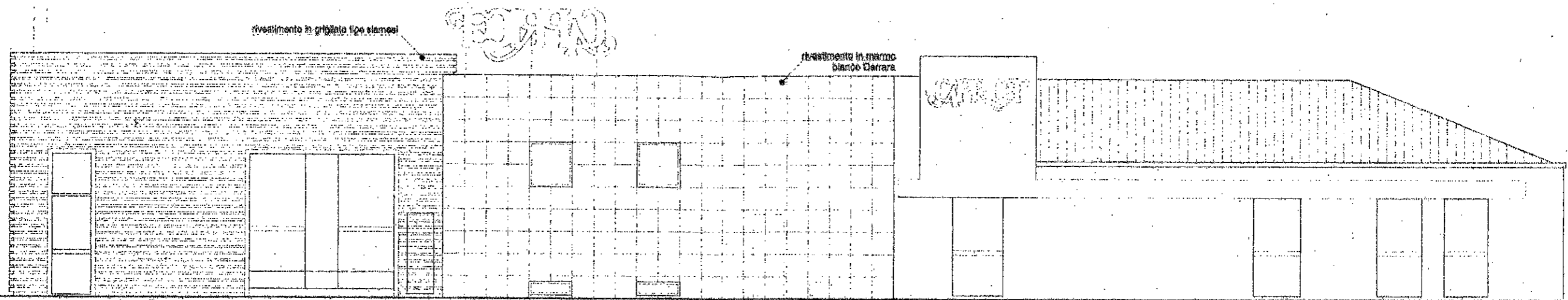
FILE
2
16
0



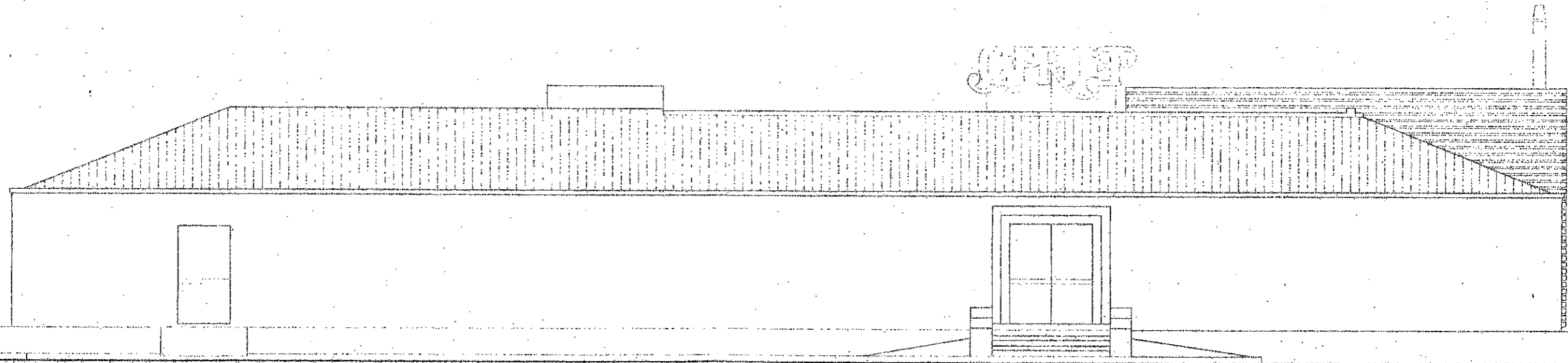
PIANTA DELLA COPERTURA



ELLA COPERTURA

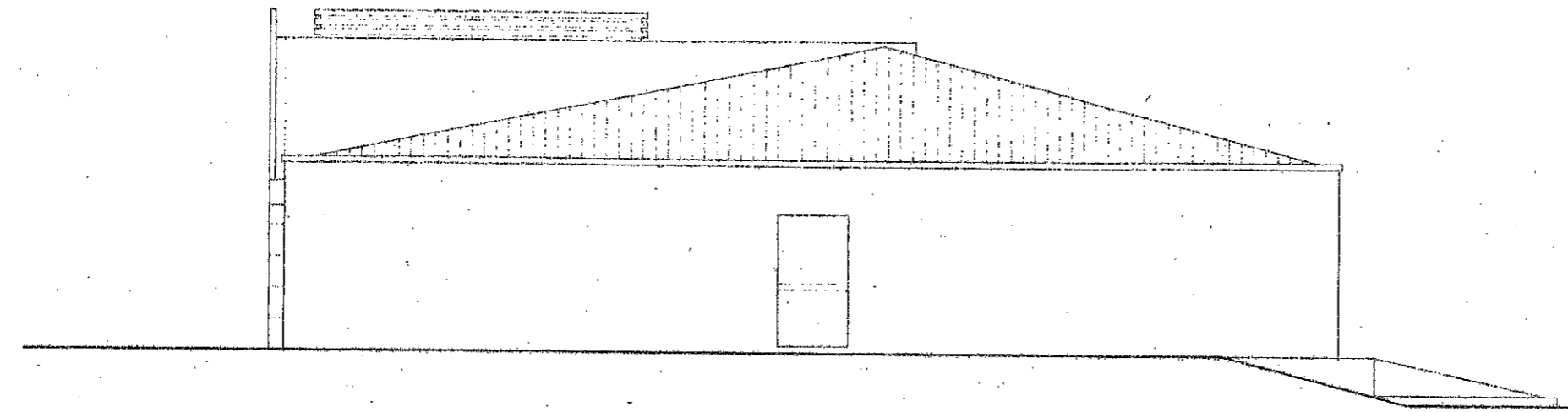


PROSPETTO OVEST

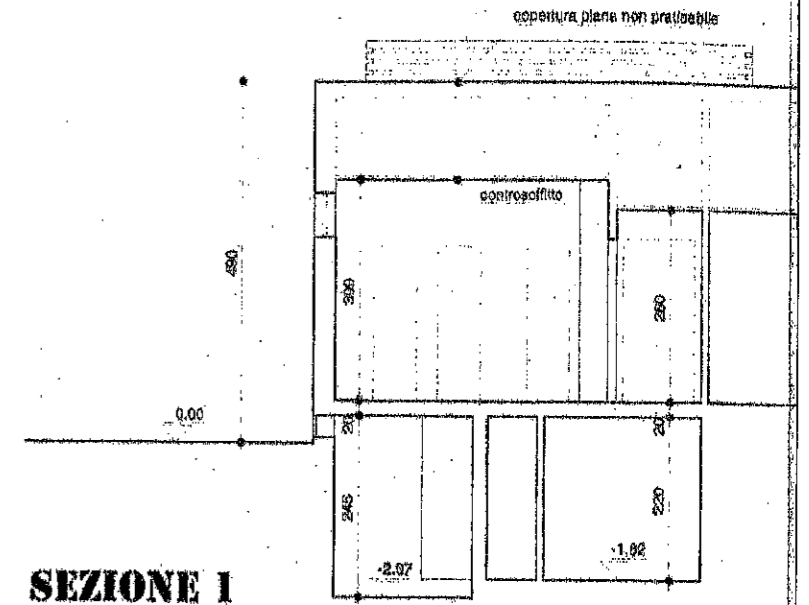


PROSPETTO EST

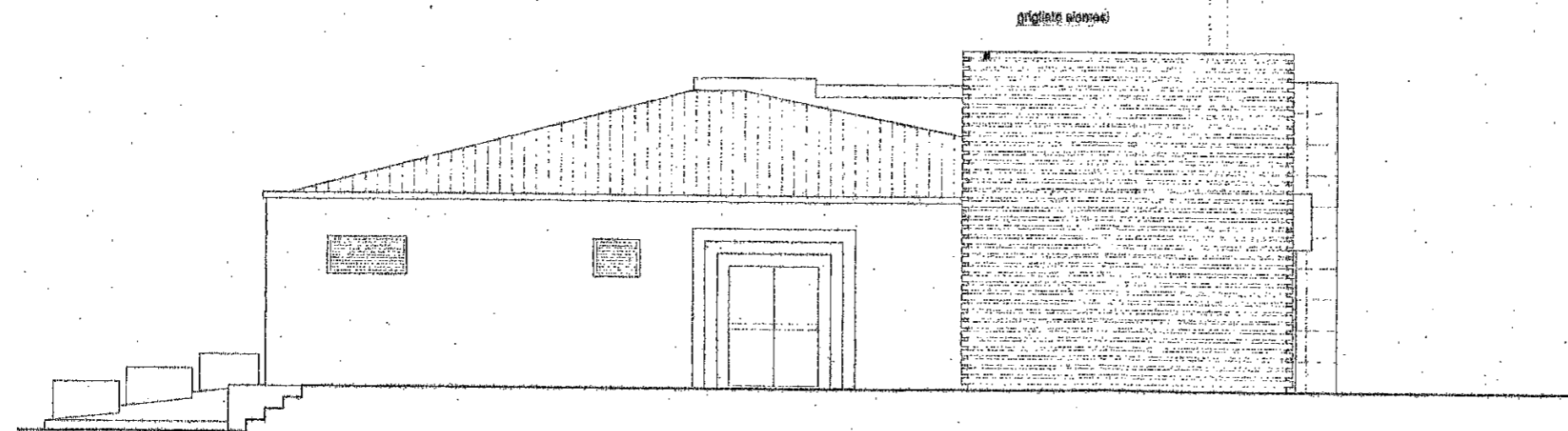
ed
ita
e
li



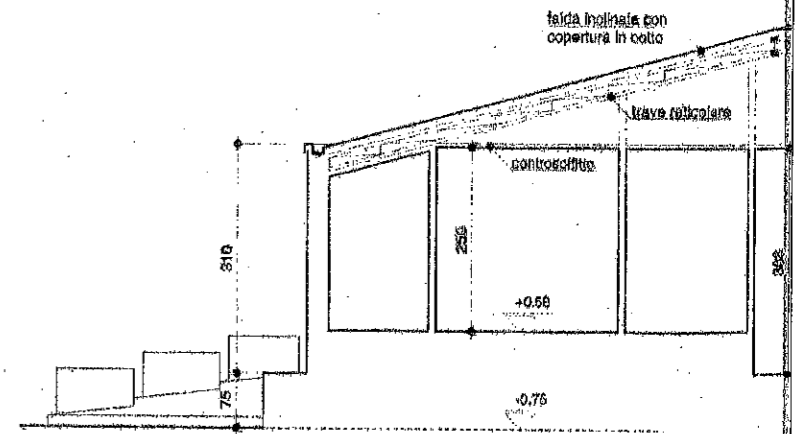
PROSPETTO SUD



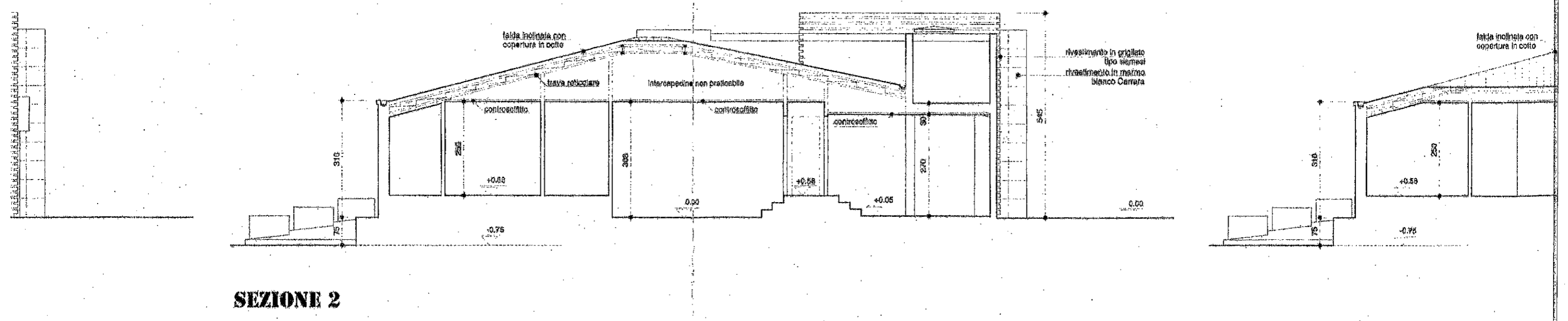
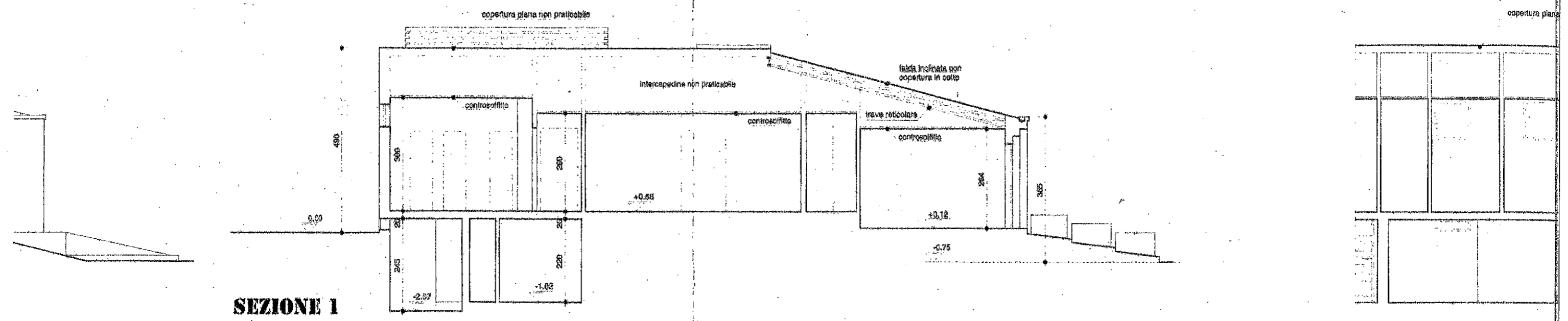
SEZIONE 1

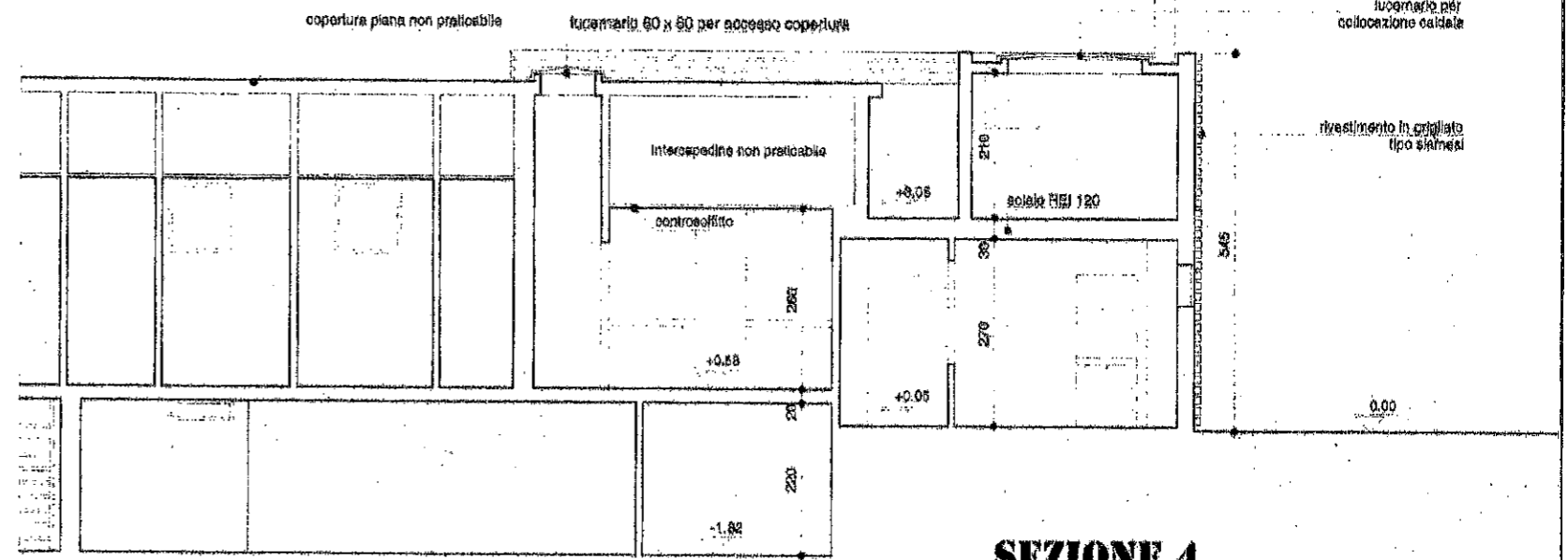
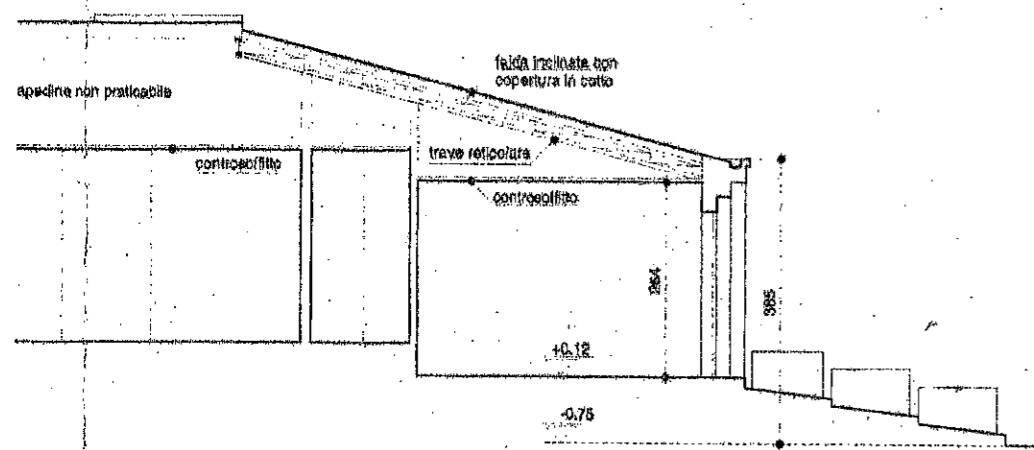


PROSPETTO NORD

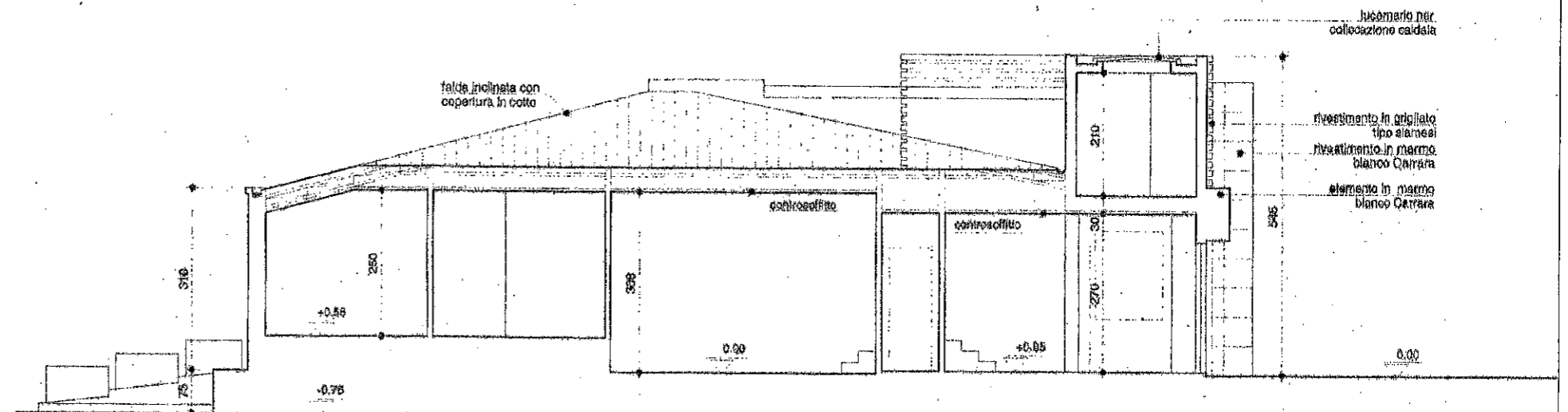
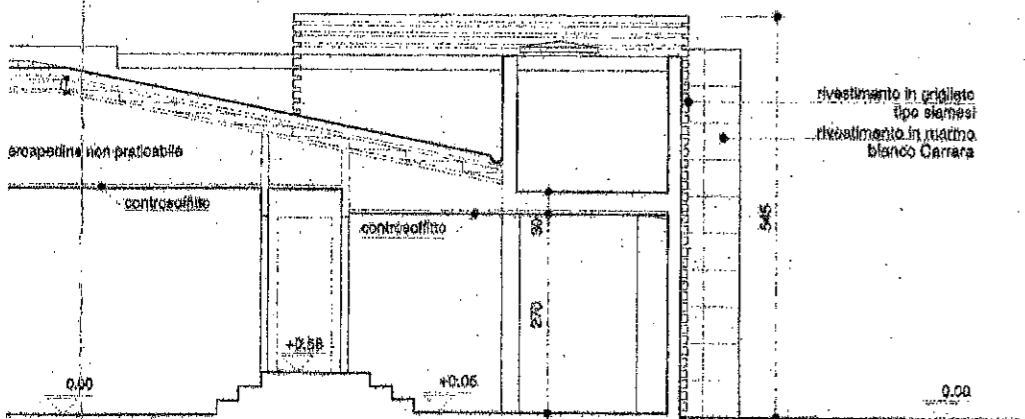


SEZIONE 2





SEZIONE 4



SEZIONE 3