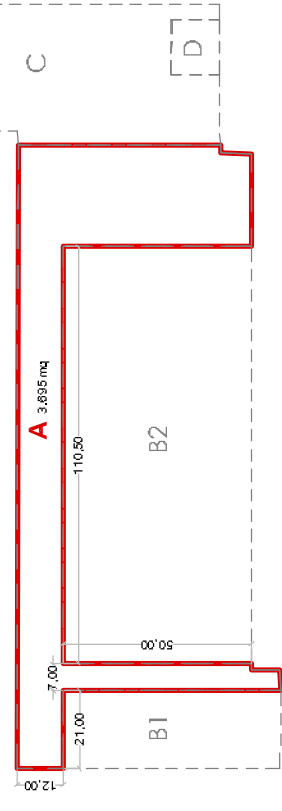


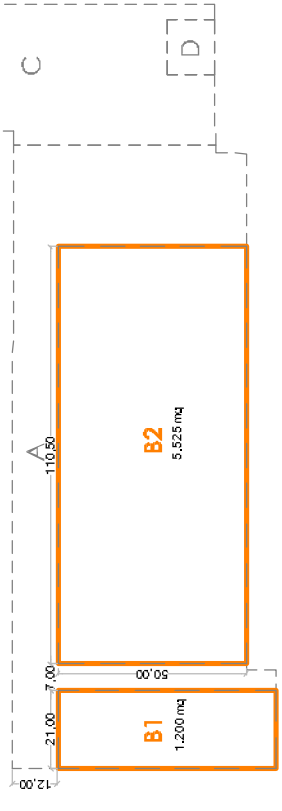
SOTTOZONA C1

Superficie Territoriale = 14.100 mq

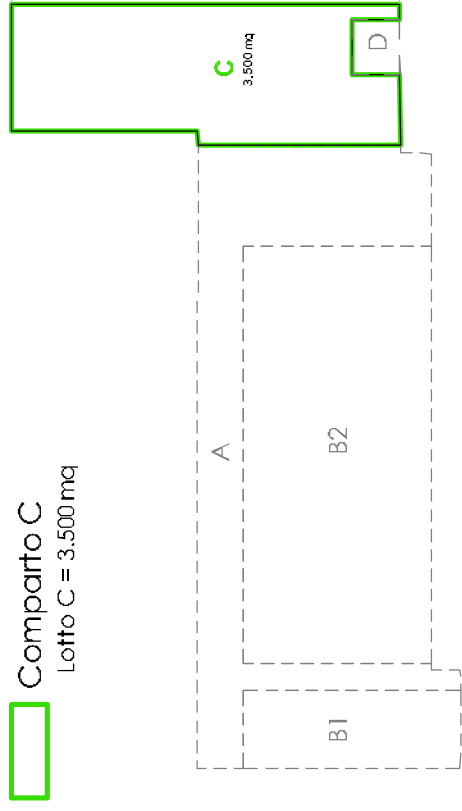
Comparto A
Lotto unico = 3.695 mq



Comparto B Superfici Fondiarie = 6.725 mq
Sup. Permeabile > 25 % Sup. Fond.
Lotto B1 = 1.200 mq
Sup. Cop. = esistente (è ammessa la Ristr. Urb. con Sup. Cop. max=240 mq e Hmax=6,00 m)
Lotto B2 = 5.525 mq
Sup. Cop. = 1.200 mq
Hmax = 6,00 m



Comparto C
Lotto C = 3.500 mq



Comparto D
Lotto D = 180 mq

